

# TABLET/CHROMEBOOK CHARGING STATIONS



## Tablet/Chromebook Charging Stations

Charge, sync, secure and organize up to 48 tablets or 32 Chromebooks in a locking steel cabinet.

Perfect for:

- iPad® • Android® • Kindle Fire™ • Surface™
- Chromebook™ • MacBook® • Ultrabook®



Charge, sync, secure and organize up to 48 tablets or 32 Chromebooks in a

locking steel cabinet • Charge, sync, secure and organize up to 48 tablets or

32 Chromebooks in a locking steel cabinet • Charge, sync, secure and organize

up to 48 tablets or 32 Chromebooks in a locking steel cabinet • Charge, sync,

secure and organize up to 48 tablets or 32 Chromebooks in a locking steel

cabinet • Charge, sync, secure and organize up to 48 tablets or 32 Chromebooks

in a locking steel cabinet • Charge, sync, secure and organize up to 48 tablets

or 32 Chromebooks in a locking steel cabinet • Charge, sync, secure and

organize up to 48 tablets or 32 Chromebooks in a locking steel cabinet •

Charge, sync, secure and organize up to 48 tablets or 32 Chromebooks in a

locking steel cabinet • Charge, sync, secure and organize up to 48 tablets or

32 Chromebooks in a locking steel cabinet • Charge, sync, secure and organize

up to 48 tablets or 32 Chromebooks in a locking steel cabinet • Charge, sync,

secure and organize up to 48 tablets or 32 Chromebooks in a locking steel

cabinet • Charge, sync, secure and organize up to 48 tablets or 32 Chromebooks

in a locking steel cabinet • Charge, sync, secure and organize up to 48 tablets

or 32 Chromebooks in a locking steel cabinet • Charge, sync, secure and

organize up to 48 tablets or 32 Chromebooks in a locking steel cabinet •

Charge, sync, secure and organize up to 48 tablets or 32 Chromebooks in a

locking steel cabinet • Charge, sync, secure and organize up to 48 tablets or 32

Chromebooks in a locking steel cabinet • Charge, sync, secure and organize up

to 48 tablets or 32 Chromebooks in a locking steel cabinet Charge, sync, secure

and organize up to 48 tablets or 32 Chromebooks in a locking steel cabinet



# TRIPP-LITE TABLET/CHROMEBOOK CHARGING STATIONS



From education to business, in settings as diverse as the hospital room and the factory floor, mobile devices have transformed every organization. As tablet and Chromebook use increases, charging and storing dozens of high-value devices in limited space becomes a big headache and an even bigger security risk. Tripp Lite's tablet charging stations (USB) and Chromebook charging stations (AC) put an end to cable sprawl and missing assets. Each station organizes up to 48 tablets or 32 Chromebooks while providing high-speed charging, convenient syncing, secure storage and flexible deployment in a variety of settings.

## HIGH-SPEED CHARGING

USB charging automatically matches each tablet's top charging speed, ensuring faster turnaround times and maximum availability of in-demand devices. AC charging works through standard outlets that allow you to plug in and charge all your Chromebooks at once. All the outlets and AC adapters are hidden from view during use, and cabling is neatly organized.



USB charging stations provide up to 2.4 amps (12 watts) per device, automatically matched to each tablet's top charging speed.



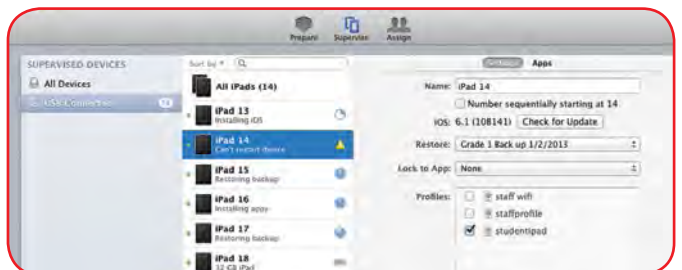
AC charging stations provide up to 12 amps (1,440 watts) total, with a standard AC power outlet for each device.

## CONVENIENT SYNCING (Tablet Charging Stations Only)

Connect the USB uplink port to a host computer to sync connected devices. The sync function is perfect for updating software, backing up important data and returning tablets to standardized/authorized configurations after use. Wired syncing complements wireless functionality by providing high-speed, high-bandwidth device access and reducing congestion of busy Wi-Fi networks.



Connect the included USB cable to the sync uplink port and your computer. Cable access permits syncing while the cabinet is locked.



The sync uplink port allows you to configure, back up and restore tablets using software installed on your computer.



## SECURE STORAGE

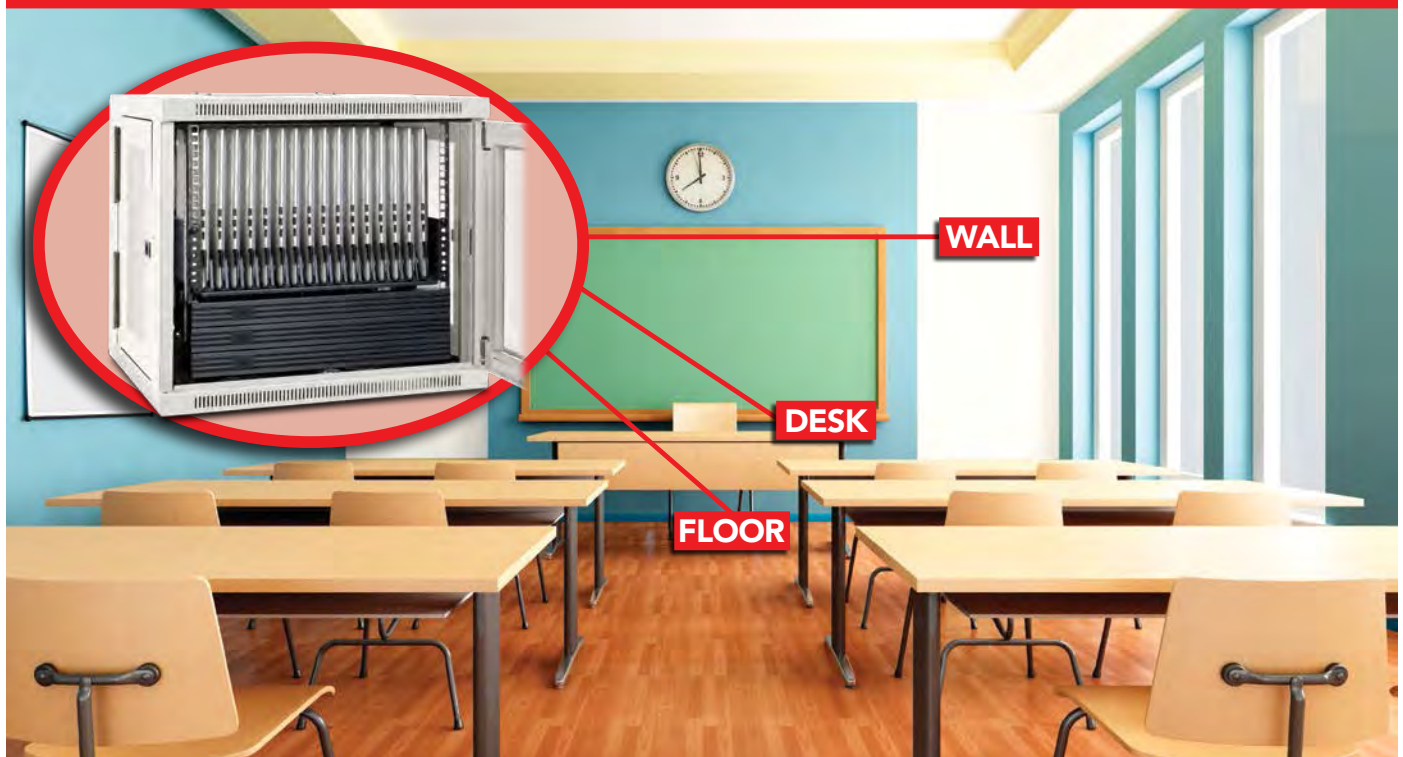


Tablets and Chromebooks represent a substantial investment, both in hardware and valuable data. A classroom equipped with tablets can easily represent more than \$10,000 in hardware costs alone. Inside the charging stations, your devices are surrounded by steel. The door and side panels lock securely for controlled access without interfering with charging. Flow-through ventilation ensures that devices will not overheat, even while charging simultaneously.

## FLEXIBLE DEPLOYMENT

Charging stations support several deployment options, including mounting or placement on a wall, desk, table, counter or floor. The optional mobile cart conversion kit (CSHANDLEKIT) adds a handle, rolling casters and power cord manager. Available in black or white, charging stations blend into a variety of classroom and office environments.

### MOUNTS TO:



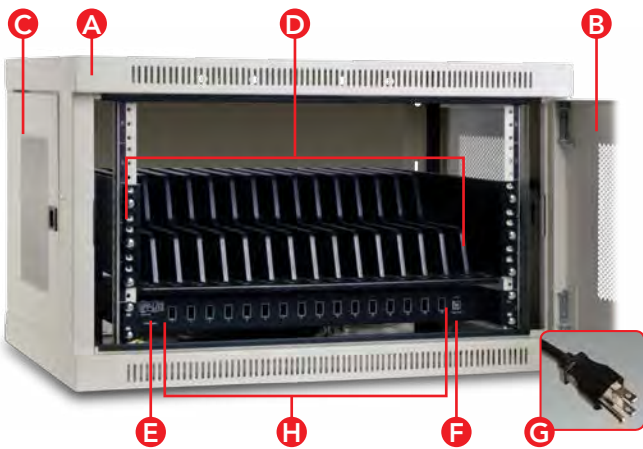
## TABLET CHARGING STATIONS (USB)



- Secure and organize 16, 32 or 48 tablets, including iPad and Android models
- Provide syncing and high-speed USB charging (up to 2.4 amps per device)
- Mount to wall, desk, table, counter or floor, with support for mobile cart applications
- Prevent theft and tampering with locking steel door and side panels
- Provide flow-through ventilation to prevent devices from overheating while charging

**All models available in black or white**

### FEATURE FOCUS



Model: CS16USBW

**16 Tablets**

- A** Steel Cabinet
- B** Locking Door
- C** Locking Side Panels
- D** Non-Scratching Shelves with Adjustable Dividers
- E** Firmware Upgrade Port
- F** USB Sync Uplink Port
- G** AC Power Cord with NEMA 5-15P Plug
- H** USB Device-Charging Ports with Activity LEDs



Model: CS32USB

**32 Tablets**



The optional mobile cart conversion kit (CSHANDLEKIT) adds a reversible handle, rolling casters and power cord manager to select models.



- A** Steel Cabinet
- B** Locking Door
- C** Locking Side Panels
- D** Non-Scratching Shelves with Adjustable Dividers
- E** Firmware Upgrade Port
- F** USB Sync Uplink Port
- G** AC Power Cord with NEMA 5-15P Plug
- H** USB Device-Charging Ports with Activity LEDs

Model: CS48USB

## SPECIFICATIONS



### TABLET CHARGING STATIONS (USB)

Black Model	White Model	Device Capacity	USB Charging Current	Dimensions (H x W x D)	Weight	Cabinet Material
CS16USB	CS16USBW	16 Tablets	2.4A per Device	14.6 x 23.6 x 17.7 in.	55 lb	Steel
CS32USB	CS32USBW	32 Tablets	2.4A per Device	25.1 x 23.6 x 21.6 in.	96 lb	Steel
CS48USB	CS48USBW	48 Tablets	2.4A per Device	35.6 x 23.6 x 21.6 in.	150 lb	Steel

All models: 110-240 VAC, 50/60 Hz input. 2-year limited warranty. Standards: Tested to UL/CSA 60950-1, IEC 60950-1, FCC Class B, NOM, RoHS, PCI-DSS.

### ACCESSORIES

Model	Description
M110-10N-BK	10 in. USB to Apple® 30-Pin Connector Cable (Black)
M110-10N-BK-10	10 in. USB to Apple 30-Pin Connector Cable (Black, 10-pack)
M100-10N-BK	10 in. USB to Apple Lightning™ Connector Cable (Black)
M100-10N-BK-10	10 in. USB to Apple Lightning Connector Cable (Black, 10-pack)
CSHANDLEKIT	Mobile Cart Conversion Kit (Includes reversible handle, four rolling casters and power cord manager.)
U326-001-BK	1 ft. USB 3.0 A to 5-Pin Micro-B Cable (Black)
U326-001-BK-10	1 ft. USB 3.0 A to 5-Pin Micro-B Cable (Black, 10-pack)
UR050-001-24G	1 ft. USB 2.0 Reversible A to 5-Pin Micro-B Cable (Black)
UR050-001-24-10	1 ft. USB 2.0 Reversible A to 5-Pin Micro-B Cable (Black, 10-pack)





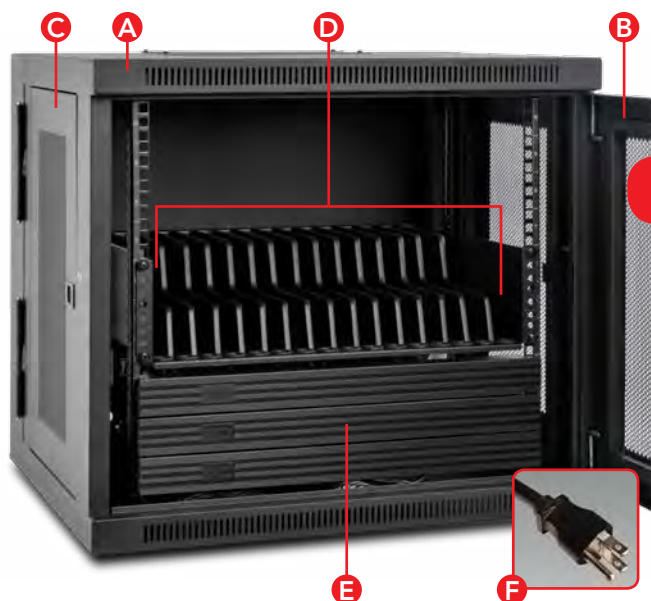
## CHROMEBOOK CHARGING STATIONS (AC)



- Secure and organize 16 or 32 Chromebooks
- Provide high-speed charging with built-in AC outlets for every device
- Mount to wall, desk, table, counter or floor, with support for mobile cart applications
- Prevent theft and tampering with locking steel door and side panels
- Provide flow-through ventilation to prevent devices from overheating while charging

**All models available in black or white**

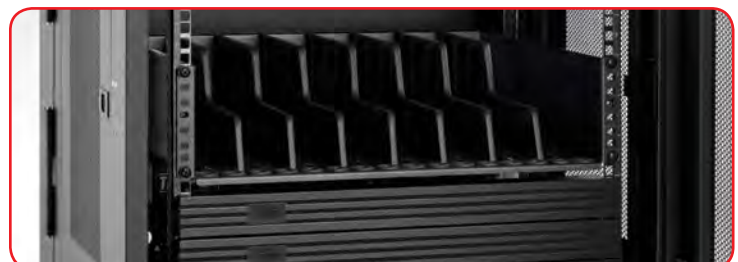
## FEATURE FOCUS



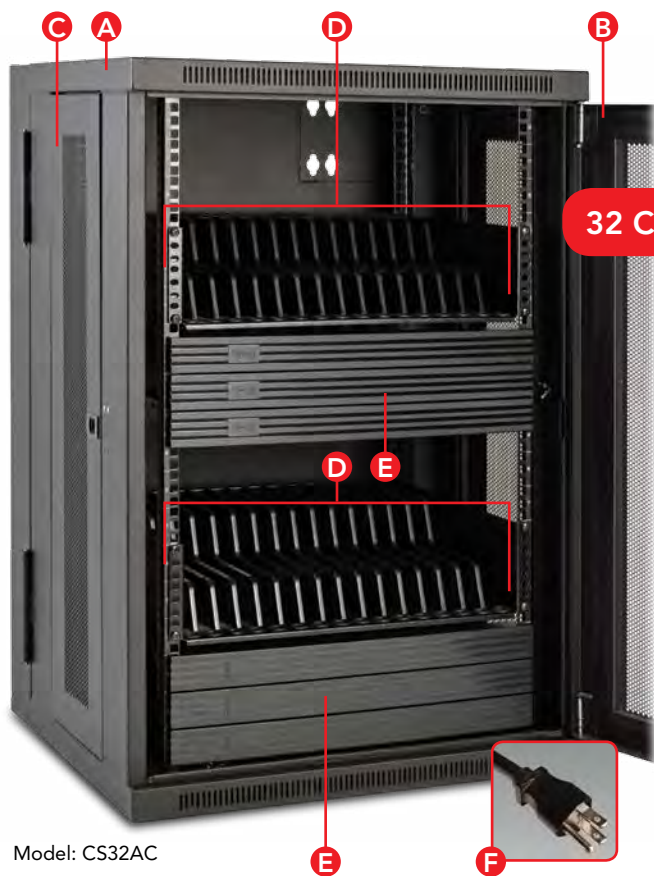
**16 Chromebooks**

- A** Steel Cabinet
- B** Locking Door
- C** Locking Side Panels
- D** Non-Scratching Shelves with Adjustable Dividers
- E** Trim Panels (Conceal AC Adapters and Cords)
- F** AC Power Cord with NEMA 5-15P Plug
- G** AC Device-Charging Outlets (NEMA 5-15R)

Model: CS16AC



*If you need to accommodate thicker devices, simply adjust the dividers to provide more space. The dividers and shelf are both designed to prevent device scratches.*



Model: CS32AC

- A** Steel Cabinet
- B** Locking Door
- C** Locking Side Panels
- D** Non-Scratching Shelves with Adjustable Dividers
- E** Trim Panels (Conceal AC Adapters and Cords)
- F** AC Power Cord with NEMA 5-15P Plug
- G** AC Device-Charging Outlets (NEMA 5-15R)



The optional mobile cart conversion kit (CSHANDLEKIT) adds a reversible handle, rolling casters and power cord manager to select models.

## SPECIFICATIONS



### CHROMEBOOK CHARGING STATIONS (AC)

Black Model	White Model	Device Capacity	Maximum AC Charging Current	Dimensions (HxWxD)	Weight	Cabinet Material
CS16AC	CS16ACW	16 Chromebooks	12 A (1,440 W)	21.6 x 23.6 x 21.6 in.	72 lb	Steel
CS32AC	CS32ACW	32 Chromebooks	12 A (1,440 W)	35.6 x 23.6 x 21.6 in.	96 lb	Steel

All models: 120 VAC, 50/60 Hz input. 2-year limited warranty. Standards: Tested to UL/CSA 60950-1, NOM, RoHS, PCI-DSS.

### ACCESSORY

Model	Description
CSHANDLEKIT	Mobile Cart Conversion Kit (Includes reversible handle, four rolling casters and power cord manager.)

